

*The Lancaster County Convention Center  
and Lancaster Marriott at Penn Square*

# PERMANENT ART COLLECTION

*Exemplifying the Remarkable Creativity Abundant  
in the Arts Community of Lancaster, Pa.*

# PERMANENT ART COLLECTION

*Exemplifying the Remarkable Creativity Abundant  
in the Arts Community of Lancaster, Pa.*

The Lancaster County Convention Center and Lancaster Marriott at Penn Square represents a community effort. This world-class facility, considered by many to be one of the most important economic development projects in the region in decades, intends to pay just tribute to this remarkably exciting and unique community, both the community fabric that exists today and the historical elements of its treasured past.

One of the ways in which Lancaster's rich cultural heritage is apparent is in the artwork installed permanently in the facility's public spaces, all representative of the creativity of Lancaster-based artists. Lancaster's vibrant arts community is exemplified by its dozens of galleries and venues throughout the City and County and is a key to the ongoing success here culturally and economically. We are proud to share some of the work that is a result of the talent and creativity that is so abundant throughout Lancaster.

For more information about the many talented artists working in  
Downtown Lancaster and throughout Lancaster County,  
we invite you to visit:

[www.LancasterARTS.com](http://www.LancasterARTS.com)

Kevin Lehman is native to Lancaster County, Pennsylvania. He began his career as a functional potter and then focused considerable attention on large works in clay — colossal jars, tile fireplaces, grand wall decor and large exterior sculptures. As new ideas arise, Kevin and his work continues to evolve. He is currently working with multiple materials including glass, metal, wood and concrete and collaborating with fellow artists to create works of art.

A graduate of Millersville University with a bachelor's degree in art, Kevin's current studio is a 13,000-square-foot warehouse in the City of Lancaster. The facility allows ample room for artists to teach classes and engage in projects large and small.

"Creativity is my passion. It is spontaneous and limitless. For this reason the work I create varies from functional to architectural to sculptural. My approach to working starts with an idea. Then I work through the idea creating a variety of objects. The process is open to "happy accidents" which lead to other possibilities. The results are products of my ideas, experiences and the serendipitous nature of the creative process."

## KEVIN LEHMAN

*Fire Rocks*

glass and metal

Main Lobby, behind  
hotel registration desk



### Contact Information

Kevin Lehman's Pottery  
560 South Prince St.  
Lancaster, PA 17603  
717.509.7547  
[www.klpottery.com](http://www.klpottery.com)

## **LAURA WATT**

*City Planning*

oil on canvas

Main Lobby, entrance to  
Rendezvous Lounge

Laura Watt is a Lancaster native and a descendent of Peter T. Watt, co-founder of the former Watt & Shand department store, whose historic Beaux Arts façade stands preserved as part of today's facility. The art and cultural history of Lancaster County continues to inform her work as a painter.

"The relationship between color and pattern is infinitely complex. Form generates out of pattern. Repetition marks time. Repetition creates something new.



I continue to find it interesting to make paintings that are developed out of pattern. Pattern language is an integral structure of many mediums, particularly textiles. While I do, periodically, make textile-based work and continue to be a student of the textile form; I find I am seduced by the framework and endgame that is painting. The conceptual limits of painting and consequent transgressions make

it an ideal discipline in which to explore the metaphoric, narrative and formal elements of pattern and color."

## **Contact Information**

Laura Watt  
141 Pelham Rd.  
Philadelphia, PA 19119  
215.880.3003

This painting references quilts and the quilting tradition of Lancaster County within the genre of geometric color system painting.

Jerome Hershey is a distinguished abstract painter, active for 30 years in Lancaster. Hershey grew up in a small college town in Lancaster County, Pa. Since 1981, he has worked out of his studio over-looking Central Market in historic Downtown Lancaster. He lives nearby with his wife, daughters and their West Highland White Terrier, who enjoys going to the studio almost as much as chasing squirrels.

**JEROME HERSHEY**

*REM 1975*

acrylic on canvas

Level 3, Heritage  
Ballroom corridor



**Contact Information**

Jerome Hershey  
34-1/2 North Queen St.  
Lancaster, PA 17603  
717.397.6355  
[www.jeromehershey.com](http://www.jeromehershey.com)

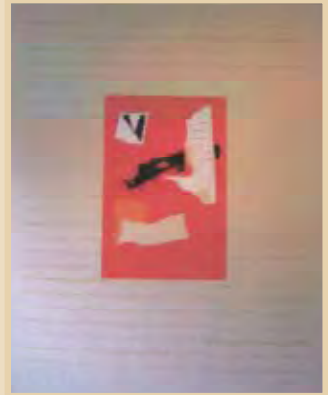
## **GAIL GRAY**

*The Griest Building (left)*

acrylic and serigraph on stretched canvas

Level 2 corridor

The subject of The Griest Building, located on Penn Square diagonal to the Lancaster County Convention Center and Lancaster Marriott at Penn Square facility, is the first Twentieth Century Modernist downtown building, and until rivaled by the Lancaster Marriott tower, remained the tallest in the Lancaster skyline. Together with the convention center and hotel facility, it represents continuity and growth in the new century.



*Deciphering the  
Fragmentary Record  
(right)*

abstract stretched canvas

Level 2,  
Federal Room-A entrance

"Lancaster County has a strong tradition of geometric, abstract art executed in textiles (quilts). Translation of this design sensibility into other media has been and continues to be a dominant theme in my work."

## **Contact Information**

Gail Gray  
34-1/2 North Queen St.  
2nd floor  
Lancaster, PA 17603  
717.393.0266

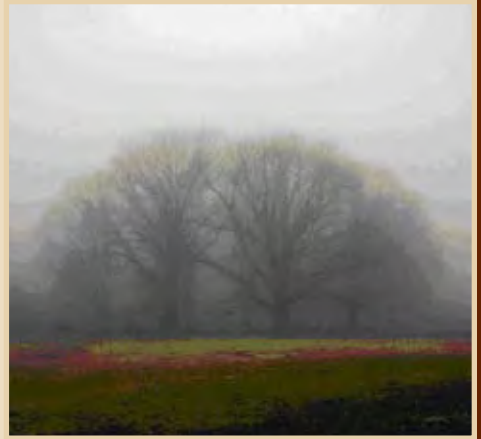
"Through my paintings, I attempt to record a feeling or mood that cannot be described verbally. I make use of metaphor and symbolism to convey my message and like the romantics; I strive to merge the self and nature in landscape paintings. Much of my work involves the relationship of man and the natural organic world he lives in or isolates himself from. It is my hope that the viewer will find solace and mystery in these light filled works of contemplation and meditation."

## **MARK WORKMAN**

*Grove in Fog*

acrylic painting  
on paper

Level 2,  
Federal Room-B entrance



### **Contact Information**

Mark Workman  
107 South Locust St.  
Lititz, PA 17543  
717.367.9236  
[www.markworkmanart.com](http://www.markworkmanart.com)

## FRED RODGER

*In the Heat of the Night*  
(left), *In the Beginning*  
(middle), *Marshmallow*  
*Moon* (right)

acrylic on panel

Level 2,  
boardroom corridor



Originally from Pittsburgh, Fred Rodger considers Lititz, Pa., to be his childhood home. Little did he know at the time, but his long-time friend David Brumbach would have an impact on his life. Brumbach, an accomplished artist himself, died in 1992 at the age of 42. Before his death, David said to Fred, "You have talent, but you don't use it." At the time Rodger was teaching biology and coaching wrestling at an area high school. His friend's death was an awakening for Fred as he realized that we have only a limited time on earth, and we have one chance and limited time to accomplish whatever it is we're going to do.

Fred began taking art and art history classes. He now holds a bachelor's degree in biology from West Chester University, and both bachelor's and masters degrees in art from Millersville University.

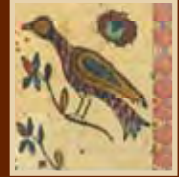
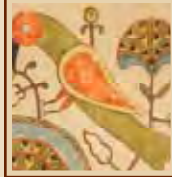
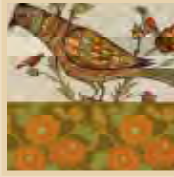
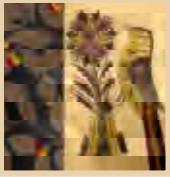
After 33 years of teaching art and science, Rodger left the teaching profession to pursue a career as an artist. He still enjoys teaching and teaches art history on a part-time basis, but spends most of his time painting. His studio is located in his home which he shares with his wife (also an artist) and their Jack Russell Terrier, Gizmo.

## Contact Information

Fred Rodger  
Red Raven Art Company  
138 North Prince St.  
Lancaster, PA 17603  
717.299.4400  
[www.redravenartcompany.com](http://www.redravenartcompany.com)



"This work reflects fraktur heritage, but uses more contemporary patterns. The concept was to reflect the local, traditional arts & crafts while executing the work with a more contemporary approach. Each piece honors these traditional arts & crafts of the region: fraktur, clayware including red ware and quilting. The source material for each fraktur is the original work, some that reside in local collections. I reworked and adapted each fraktur so the final work is



an original piece of art. The works are done using hand painted and carved tile. The pieces are cut mosaic which is a faster, historic technique used by Henry Mercer of Moravian Tileworks. Tile has an unusual and amazing tactile appeal."

## **DEIRDRE FOLEY CITRO**

*Five Fraktur Birds*

*hand painted  
ceramic tiles*

Level 4, Susquehanna  
Boardroom corridor

### **Contact Information**

Deirdre Foley Citro  
560 South Prince St.  
Lancaster, PA 17603  
717.940.8955

[www.newgrangestudio.com](http://www.newgrangestudio.com)

# SARAH MCRAE MORTON

*The Hope Chest*

oil on canvas

Level 3, Heritage  
Ballroom corridor



Sarah McRae Morton grew up in Lancaster County and attended The Pennsylvania Academy of the Fine Arts and the University of Pennsylvania from 2003 to 2007. A modern American painter rooted in the European tradition, McRae Morton studied figure painting under Nelson Shanks in 2005 and also completed a one-year program with The Barnstone Studios in draftsmanship, design and color theory during 2003. Sarah completed a residency at Skowhegan School of Painting and Sculpture in Maine in the summer of 2007.

McRae Morton has exhibited in the Philadelphia and Lancaster area since 2004. During this time, she was also able to study while traveling in Europe (in residence) with the contemporary artist Odd Nerdrum. Sarah's primary intention is to travel and paint her experiences.

## Contact Information

Studio of  
Sarah McRae Morton  
202 Georgetown Rd.  
Strasburg, PA 17579  
717.572.9061  
[www.mcraemorton.com](http://www.mcraemorton.com)

"Straight sided shapes reference human activity in my art. When layered and juxtaposed they represent the many decisions and changes in direction experienced throughout time, whether they be orderly or chaotic, pleasant or strident, or hidden or revealed. Color sets a mood. Composition suggests a narrative. Layers symbolize cumulative time slices. Each layer remains whole, not blending or losing identity, but built upon, becoming porous, revealing glimpses of the past. The artist's role is to take viewers to uncharted imagined places, not to assuage but to inspire, to engage the mind and the senses. As Picasso said, the purpose of abstraction is to keep the joy of discovery the pleasure of the unexpected."



"In 2007 I began a Phosphene Series. I can remember the exact moment of inspiration. It occurred while I was a passenger in a car on the Merritt Parkway going to Connecticut for Christmas 2006. The bright sun streaming on the side window made me temporarily close my eyes. What a lovely pattern of brightness and darkness resulting as the shapes of the trees repeated in staccato rhythm on my inner eye as we sped along. The series recreates the image and after image of phosphene patterns on the eye. The initial paintings stayed true to the tree impressions but gradually gave way to a celebratory sense of confetti caught in an updraft and floating in space."

**ELLEN SLUPE**

*Phosphenes: Lilac, Pale Green & Fall Reflections*

archival acrylic paint  
on double primed  
Italian linen

Level 3,  
boardroom corridor

**Contact Information**

Ellen Slupe

717.381.6017

[www.ellenslupe.com](http://www.ellenslupe.com)

## **TOBY RICHARDS**

### *The River Rock Collection*

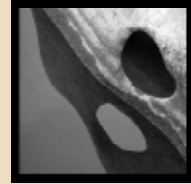
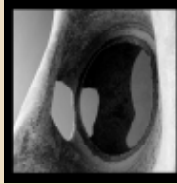
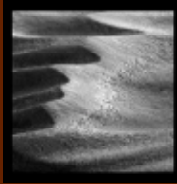
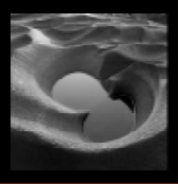
black & white  
photographs

Vine Street Lobby

The River Rocks Collection premiered during a 2008 Downtown Lancaster Art Walk. Richard's exploration of the interaction of light and shadow, line and form, led to a collection of abstract black & white photographs of water eroded rock formations from the region's Susquehanna River.

*"To escape the chaos of daily living  
I paddle my kayak away from the shore  
And out onto the water to the rock landscape  
Which appears only when the river is very low.  
Among the infinite jumbled possibilities  
I search for line, form, shadow, and light  
That focus the eye and make strong unified  
compositions.*

*My passion is to create images, which are  
beautiful,  
Reveal an unseen world and quiet the mind."*



## **Contact Information**

Toby Richards Studio  
139 Nevin St.  
Lancaster, PA 17603  
917.620.8629  
[www.TobyRichards.com](http://www.TobyRichards.com)

Overall Theme: Studies in positive and negative form, this body of work expresses the intrinsic limitation that language places on communication. It engenders playful, contemporary systems of signs and symbols that represent the inadequacy of language at truly conveying meaning. The work creates a means of communication as nonsensical as our everyday use of language. Five Bit Binary Substitution 031 is composed of both organic and geometric forms that are modern reinterpretations of common archaic symbols. Each one represents one or more common everyday activities. The symbols create an alphabet that is used to construct a passage of text. This work creates multiple layers of encoded information which relate directly to the viewer's desire to know, and inability to find meaning.

Materials: All of these forms are hand built from red earthenware clay by pinching, and slab constructing. These primitive methods facilitate the intuitive process and immediacy of creating while in direct contact with the material. The pieces are surfaced using earth pigments and slips in order to draw out the details. These techniques, while simple, offer an extensive vocabulary of form, texture and color.

**SHALYA MARSH**

*Five Bit Binary  
Substitution 031*

orange clay tiles

Vine Street Lobby



**Contact Information**

Shalya Marsh  
342 Nevin St.

Lancaster, PA 17603

717.290.8048

[www.shalyamarsh.com](http://www.shalyamarsh.com)

## ANN DELAURENTIS

*Urban Inclusion (left);  
Armstrong Series 6 (right)*

watercolor

Vine Street Lobby,  
elevator area



Ann DeLaurentis is a Lancaster-based artist working in watercolor and etching, and is primarily known for her color intensive urban structural “post-precisionist” paintings and up-close floral studies. She exhibits locally and regionally and has had 18 solo exhibits and numerous group and juried exhibits. Ann is a member of the Echo Valley Art Group, an invitational group of artists in Lancaster County with annual exhibits and art auctions.

“For me, the creation of art is all about pouring energy into a surface, building an image that holds a force of creative energy for the viewer to absorb. The architecture of Lancaster is a constant source of inspiration for

my paintings with its warm brick tones and simple geometric spaces. I have been creating images of Lancaster for more than two decades that have become a recording of my visual impressions of the beautiful and colorful series of spaces that make up my city. My newer images range from the urban and industrial to the rural iconic scenes of Lancaster, not only for their contrasting vistas, but because it is important to me to capture the disappearing and changing industrial landscapes of Lancaster, as well as the seemingly endless fields of our countryside that we work so hard to preserve.”

Notice the representation of the Montgomery House with the Lancaster Marriott tower in the background.

### Contact Information

Ann DeLaurentis  
Red Raven Art Company  
138 North Prince St.  
Lancaster, PA 17603  
717.299.4400  
[www.redravenartcompany.com](http://www.redravenartcompany.com)

It's remarkable how Robert Andriulli finds the time and light necessary for his work, maintaining the same quality and vision, while remaining dedicated to his students as an art professor at Millersville University. He serves as a major influence to Lancaster's painting community, including former students Nathan Brumbach, Janell Olah, and Paul Manlove.

"For more than 20 years, my work has been concerned with issues of representational painting and drawing. The light and forms in nature have always been a source of inspiration, information and a point of departure in my work. The category of landscape and cityscape in my images is self-evident, but what differentiates the work is how it is executed.

I continue to paint directly from nature, in South Central Pennsylvania, and during travels to Florida, Hawaii, Arizona, New Mexico, Utah, Montana and Europe. These paintings are sometimes completed on the spot, while others are started on location and finished in the studio. In contrast, my studio creations evolve over time, exploring formal and expressive concerns, using as their source paintings and drawings from life, memory, photographs and invention.

What all my work has in common is the use of the language of art to find a visual equivalent for various experiences both seen and imagined."

## **ROBERT ANDRIULLI**

*Between the  
Earth and Sky*

oil on canvas

Vine Street Lobby at  
base of escalators



### **Contact Information**

Robert Andriulli  
Lancaster Galleries  
34 North Water St.  
Lancaster, PA 17603  
717.397.5552  
[www.robertandriulli.com](http://www.robertandriulli.com)



866.503.3786

[www.lancasterconventioncenter.com](http://www.lancasterconventioncenter.com)



717.239.1600

[www.lancastermarriott.com](http://www.lancastermarriott.com)



717.207.4033

[www.pennsquaregrille.com](http://www.pennsquaregrille.com)

Lancaster, Pennsylvania